

**BT042**  
**User Guide**  
**Mode d'emploi**



**Quinny®**  
**dreami™**  
bassinet / bassinette

**French Guide Included**  
**Mode d'emploi en français inclus**

[www.quinny.com](http://www.quinny.com)

**Contents**

Warnings ..... i-1

Parts List /Features ..... 2

To fold the canopy ..... 3

To Use ..... 3

To attach cover

To remove from stroller

Care & Maintenance ..... 4

To remove the lining

To attach the mattress and lining

Warranty ..... 4

WHEN USING YOUR dreami™ AS A BASSINET:

 **WARNING – Failure to follow these warnings and instructions could result in serious injury or death.**

**FALL HAZARD –**

To help prevent falls, do not use this product when the infant begins to push up on hands and knees or has reached 15-LBS (7-kg), whichever comes first.

Child’s movement can slide bassinet. NEVER place bassinet near edges of counter tops, tables or other elevated surfaces.

**SUFFOCATION HAZARD –**

**Infants can suffocate:**

- In gaps between an extra pad and side of the bassinet
- On soft bedding.

- **NEVER** add a mattress, pillow, comforter, or padding. Use **ONLY** the pad provided by manufacturer.
- Use **ONLY** the bedding provided by the manufacturer.
- If a sheet is used with the pad, use only the one provided by the bassinet manufacturer or one specifically designed to fit the dimension of the bassinet or cradle mattress.
- To reduce the risk of SIDS, pediatricians recommend healthy infants be placed on their backs to sleep, unless otherwise advised by your physician.
- Strings can cause strangulation! Do not place items with a string around a child’s neck, such as a hood string or pacifier cords. Do not suspend strings over a bassinet or attach strings to toys.
- **CHECK** your child frequently, accidents can happen quickly.
- **DO NOT** place more than one infant in the bassinet.
- **DO NOT** allow children to play on or around bassinet.
- **DO NOT** use bassinet in a motor vehicle.
- **DO NOT USE** bassinet if any parts are missing or

broken. Contact Consumer Relations for replacement parts and instructional literature if needed.

- **NEVER** use plastic shipping bags or other plastic film as a mattress cover. They are not sold or intended for that purpose as they can cause suffocation.

WHEN USING YOUR dreami™ AS A CARRIAGE:

 **WARNING: NEVER LEAVE CHILD UNATTENDED.**

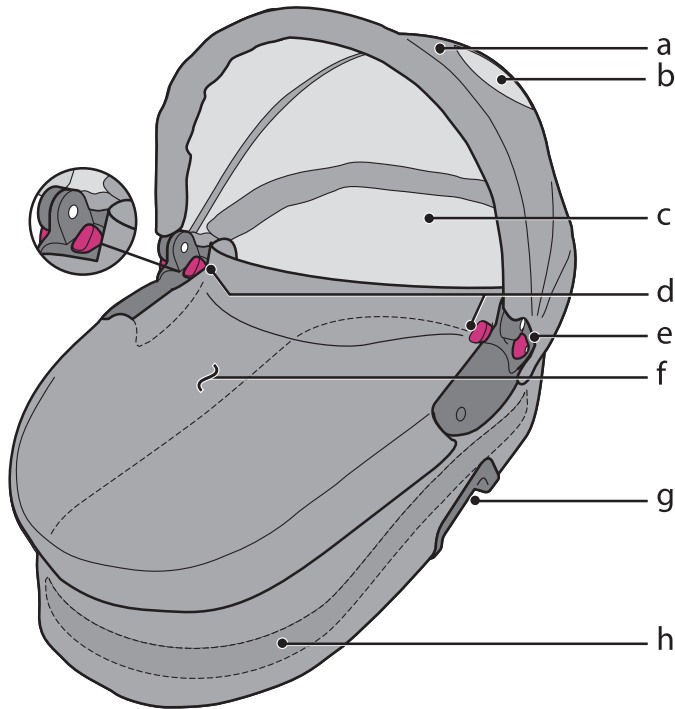
FOR THE SAFETY OF YOUR CHILD, PLEASE READ THE FOLLOWING WARNINGS AND ASSEMBLY INSTRUCTIONS AND KEEP FOR FUTURE REFERENCE.

- **CARRIAGE** is only for use with children up to 15-LBS. (7-kg).
- **NEVER LEAVE CHILD UNATTENDED. ALWAYS** keep child in view when in carriage.
- This product will become unstable if a parcel bag or rack is used when there is no provision for one.
- This product may become unstable if a parcel bag, other than the one recommended by the manufacturer is used.
- This product will become unstable if the manufacturer's recommended load is exceeded.
- **DO NOT** carry additional children, goods or accessories in or on this product except as recommended by the manufacturer's instructions.
- **ALWAYS** keep fingers away from moving parts when folding, unfolding or adjusting stroller to prevent

finger entrapment.

- **ALWAYS** make sure carriage is **FULLY OPEN AND LOCKED** before using.
- **ALWAYS** use the brakes when carriage is stopped.
- **ALWAYS** remove protective material and poly bags and dispose before assembly.
- **NEVER** use carriage on stairs or escalators.
- **NEVER** allow children to play with or hang onto the carriage.
- **NEVER** use this bassinet as a means to transport an infant in a motor vehicle.
- **NEVER** allow children to climb into the carriage. Carriage may tip over and injure child.
- **NEVER** place or hang parcels, bags or accessories on canopy. The carriage may tip over or the canopy may collapse.
- **ONLY** use this carriage with **ONE** child at a time.

**NOTE:** The dreami can be used for multiple purposes.  
 In this User Guide the following two terms are used:  
 Bassinet - The dreami used for infant to sleep in.  
 Carriage - The dreami used on the stroller.



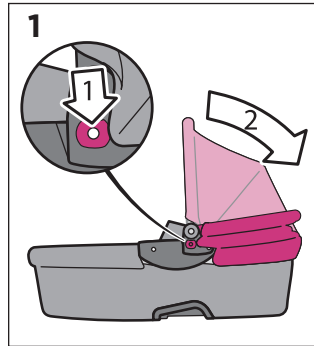
- a Canopy
- b Window
- c Lining (available as a replacable part)
- d Release buttons (to release from stroller)
- e Control buttons for canopy
- f Cover
- g Adapter opening
- h Mattress

- Keep these instructions for future use.
- Lay out and identify all parts.
- Do not return this product to the place of purchase. If any parts are missing, call Consumer Relations at (800) 951-4113 or fax at (800) 207-8182. Or visit our web site at [www.quinny.com](http://www.quinny.com). Hours of operation are 8 am to 6 pm EST Monday-Thursday and 8 am to 4:30 pm EST Friday.
- Include the model number and manufacture date and a brief description of the part. The manufacturing date code is on the back of the wash and care label.

**To fold the canopy:**

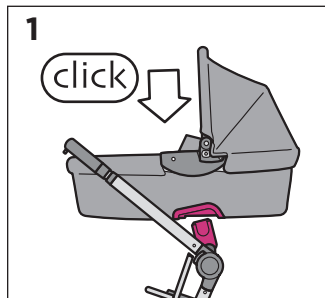
- 1** Press one of the control buttons down (on either side of the dreami) to release the lock (**Figure 1, arrow 1**).

Press button on opposite side while pushing canopy frame down (**Figure 1, arrow 2**).

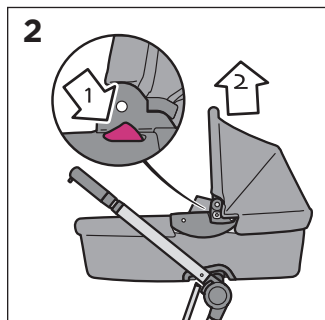
**To mount stroller:**

- 1** Position the dreami with the foot of the dreami toward the handlebar as shown (**Figure 1**). Place the dreami on the adapters until you hear a “click.”

Pull up on the dreami to ensure it is securely in place. The dreami **should not** release without pushing the release buttons.

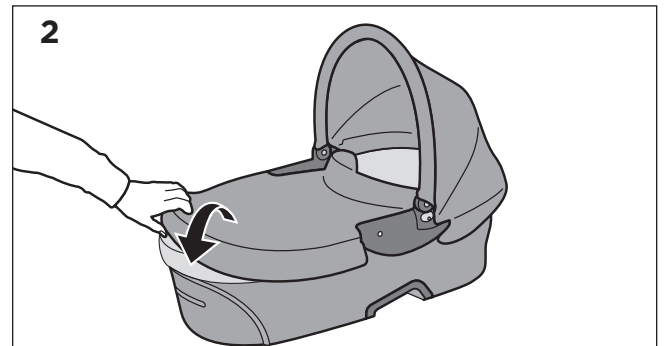
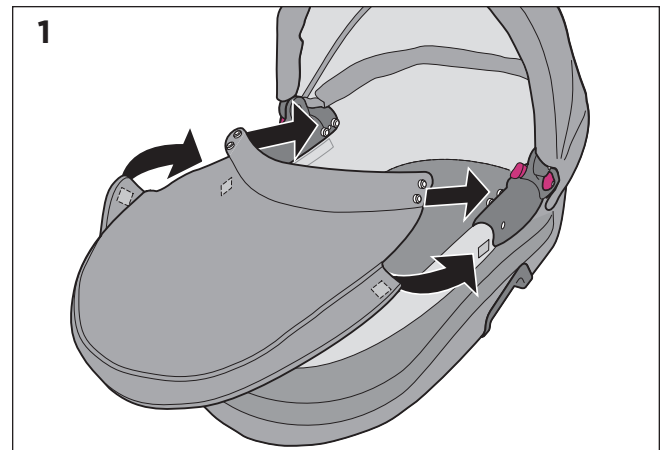
**To remove dreami™ from stroller:**

- 2** Press both release buttons **inside** canopy (1) while pulling up on the dreami (2) (**Figure 2**).

**To attach cover:**

- 2** Secure two snaps inside each side of the bassinet frame. Secure adhesive patch outside each side of the bassinet frame (**Figure 1**).

Pull bottom of cover over edge of bassinet down (**Figure 2**).



### Care and maintenance:

#### Washing the cover, restraint and canopy:

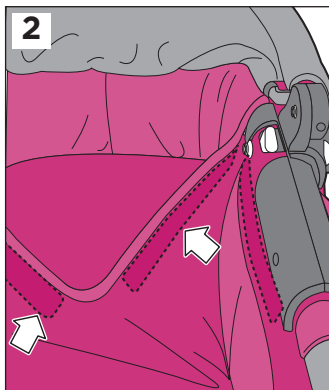
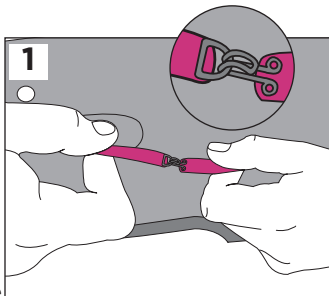
- Do not lubricate the moving parts on the dreami.
- Wipe using a damp cloth. Do not use harsh cleaning agents.

#### Washing the mattress and removable lining:

- Hand wash in cool water. Use only mild detergent. **DO NOT BLEACH.** Line dry. Do not iron.

### To remove the lining:

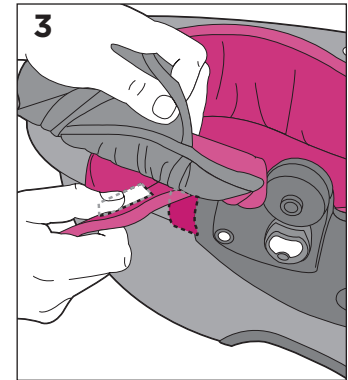
- 1** Remove the side from under the under the canopy control buttons and unhook **(Figure 1)**.
- 2** Pull the lining away from the sides and foot of the dreami to unfasten the adhesive strips **(Figure 2)**.



- 3** Pull lining away from the outside and feed it under the canopy **(Figure 3)**.

### To attach the mattress and lining:

To refasten the lining, follow the above instructions in reverse order. Be sure that all hooks and adhesive strips are secured in place. **DO NOT** use the dreami without the lining and mattress.



### Two-Year Limited Warranty

Dorel Juvenile Group, Inc. warrants to the original purchaser that this product (dreami), is free from material and workmanship defects when used under normal conditions for a period of two (2) years from the date of purchase. Should the product contain defects in material or workmanship Dorel Juvenile Group, Inc., will repair or replace the product, at our option, free of charge. Purchaser will be responsible for all costs associated with packaging and shipping the product to Dorel Juvenile Group Consumer Relations Department at the address noted on the front of this document and all other freight or insurance costs associated with the return. Dorel Juvenile Group will bear the cost of shipping the repaired or replaced product to the purchaser. Product should be returned in its original package accompanied by a proof of purchase, either a sales receipt or other proof that the product is within the warranty period. This warranty is void if the owner repairs or modifies the product or the product has been damaged as a result of misuse.

This warranty excludes any liability other than that expressly stated previously, including but not limited to, any incidental or consequential damages.

**SOME STATES DO NOT ALLOW THE EXCLUSION OR LIMITATION OF INCIDENTAL OR CONSEQUENTIAL DAMAGES, SO THE ABOVE LIMITATION OR EXCLUSION MAY NOT APPLY TO YOU.**

**THIS WARRANTY GIVES YOU SPECIFIC LEGAL RIGHTS, AND YOU MAY ALSO HAVE OTHER RIGHTS THAT MAY VARY FROM STATE TO STATE.**

# Quinny®

## dreami™

bassinets / bassinette

©2010 Dorel Juvenile Group. All Rights Reserved. Tous droits réservés.

[www.quinny.com](http://www.quinny.com) (800) 951-4113

Made in CHINA. Fabriqué en CHINE.

Styles and colors may vary. Les styles et les couleurs peuvent varier.

Distributed by (distribué par) Dorel Juvenile Group, Inc., 2525 State St., Columbus, IN 47201-7494

Dorel Distribution Canada, 873 Hodge, St. Laurent, QC H4N 2B1

08/10/10 4358-5348

[www.quinny.com](http://www.quinny.com)